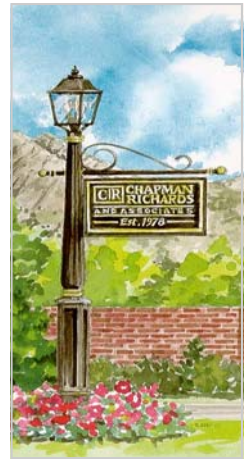
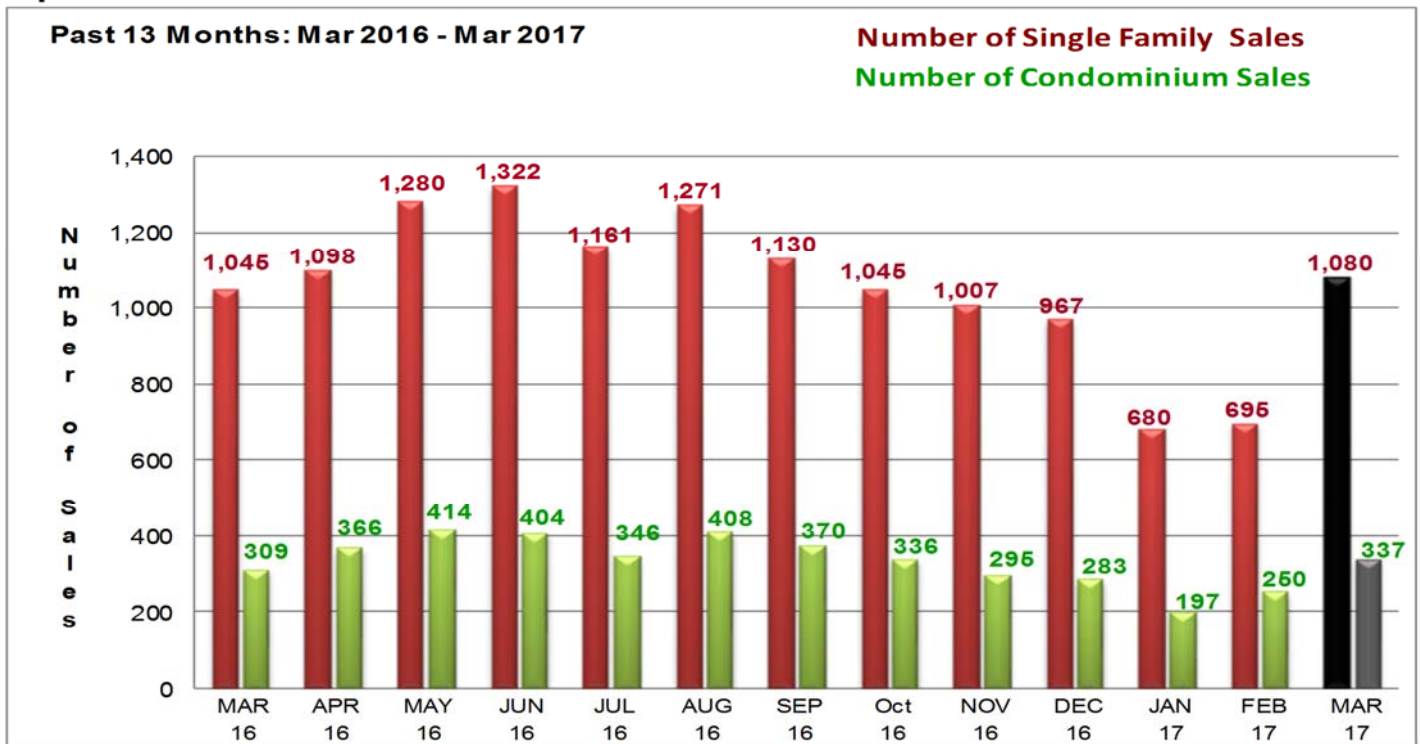


CR Market Watch

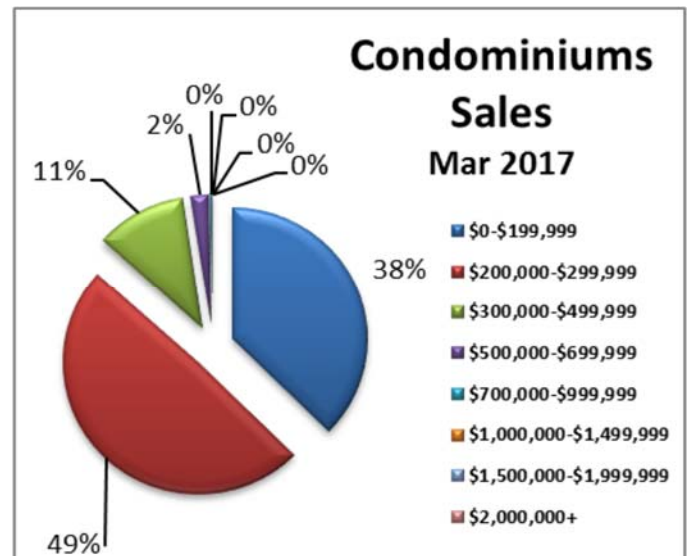
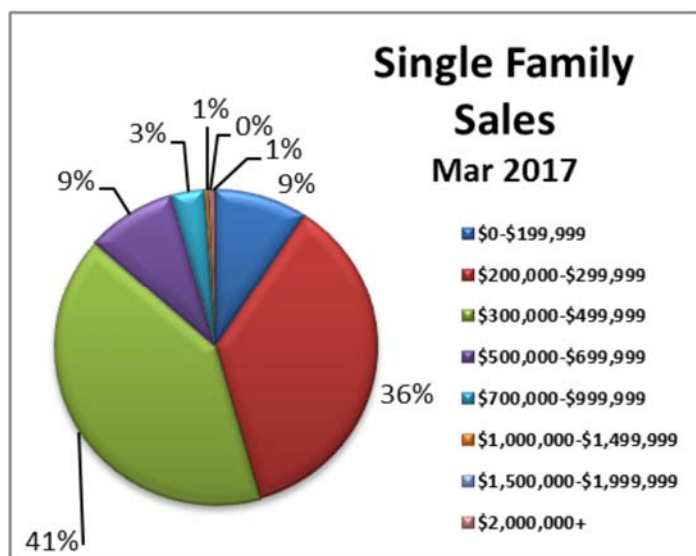


Market Activity & Trends Salt Lake County

April 2017



There were 1,080 total single family home sales and 337 condominium sales in March 2017. The number of single family sales were up 3% and condominiums were up 9% over the month March 2016. The bulk of single family home sales continues to be in the lower price ranges, with 45% of sales under \$300,000. For the past 12 months ending March 31, 2017, the median sales price for single family homes was \$300,000 and the average sales price was \$341,647.



CHAPMAN-RICHARDS REAL ESTATE UPDATE

Salt Lake County April 1, 2016– March 31, 2017

	<u>Single Family</u>	<u>Condominium</u>	<u>Total</u>
Total Active Residential Listings 3/31/2017	1,392	368	1,760
Total Sales Pending Residential Listings 3/31/2017	1,792	829	2,621
Average List Price of Active Residential Listings 3/31/2017	\$654,435	\$402,257	\$601,556
Average Sales Pending List Price Residential 3/31/2017	\$374,034	\$234,307	\$329,839
Number of Solds Past Year to Date	13,665	4,236	17,901
Compared to previous year period at same time	13,559	3,748	17,307
Percentage change from last year	0.78%	13.02%	3.43%
Average Sales Price this Past Year	\$341,647	\$217,235	\$312,207
Compared to previous year period at same time	\$312,905	\$202,785	\$289,057
Percentage change from last year	9.19%	7.13%	8.01%
Median Sales Price this Past Year	\$300,000	\$207,950	\$270,000
Compared to previous year period at same time	\$275,000	\$190,000	\$251,000
Percentage change from last year	9.09%	9.45%	7.57%

SINGLE FAMILY

<u>Price Range</u>	<u>Current Number of listings</u>	<u>Total Number of Sales for the past Year</u>	<u>Number of Months Absorption Rate</u>	<u>Median Sales Price Past Year</u>	<u>Average Sales Price Past Year</u>	<u>Average Sales Price Previous Year</u>	<u>% Change Ave. Sales Price</u>
\$0-\$199,999	61	1,596	0.46	\$175,500	\$171,308	\$167,338	2.37%
\$200,000-\$299,999	210	5,209	0.48	\$245,330	\$247,371	\$246,950	0.17%
\$300,000-\$499,999	547	5,272	1.25	\$363,000	\$373,783	\$370,785	0.81%
\$500,000-\$699,999	263	1,117	2.83	\$572,071	\$580,162	\$579,787	0.06%
\$700,000-\$999,999	152	351	5.20	\$789,900	\$805,255	\$810,122	-0.60%
\$1,000,000-\$1,499,999	79	78	12.15	\$1,222,500	\$1,228,992	\$1,182,050	3.97%
\$1,500,000-\$1,999,999	31	23	16.17	\$1,622,709	\$1,673,232	\$1,718,011	-2.61%
\$2,000,000+	49	19	30.95	\$2,825,000	\$3,738,039	\$2,512,086	48.80%
Total	1,392	13,665	1.22				

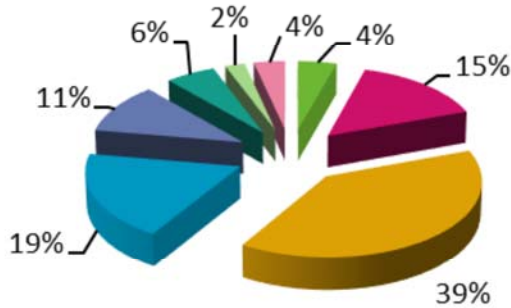
CONDOMINIUM

<u>Price Range</u>	<u>Current Number of listings</u>	<u>Total Number of Sales for the past Year</u>	<u>Number of Months Absorption Rate</u>	<u>Median Sales Price Past Year</u>	<u>Average Sales Price Past Year</u>	<u>Average Sales Price Previous Year</u>	<u>% Change Ave. Sales Price</u>
\$0-\$199,999	66	1,974	0.40	\$158,000	\$153,156	\$146,384	4.63%
\$200,000-\$299,999	155	1,812	1.03	\$240,000	\$242,745	\$236,724	2.54%
\$300,000-\$499,999	86	394	2.62	\$339,450	\$356,396	\$353,483	0.82%
\$500,000-\$699,999	20	43	5.58	\$569,000	\$572,939	\$588,032	-2.57%
\$700,000-\$999,999	24	8	36.00	\$740,000	\$775,500	\$799,600	-3.01%
\$1,000,000-\$1,499,999	9	2	54.00	\$1,124,500	\$1,124,500	\$1,234,750	-8.93%
\$1,500,000-\$1,999,999	5	3	20.00	\$1,500,000	\$1,505,666	\$1,732,000	-13.07%
\$2,000,000+	3						
Total	368	4,236	1.04				

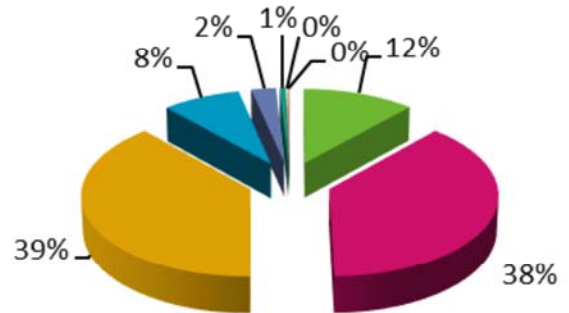
*Data collected from WFRMLS

Single Family Homes for Salt Lake County

Active Listings per Price Range on 3/31/17

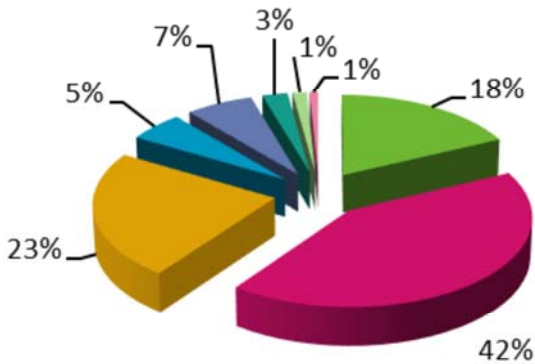


Sales per Price Range for the Period 04/01/16 to 3/31/17

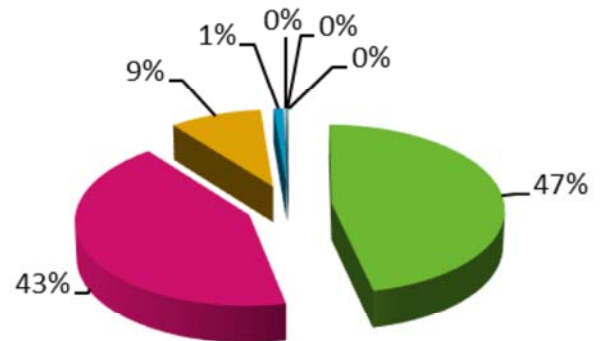


Condominiums for Salt Lake County

Active Listings per Price Range on 3/31/17

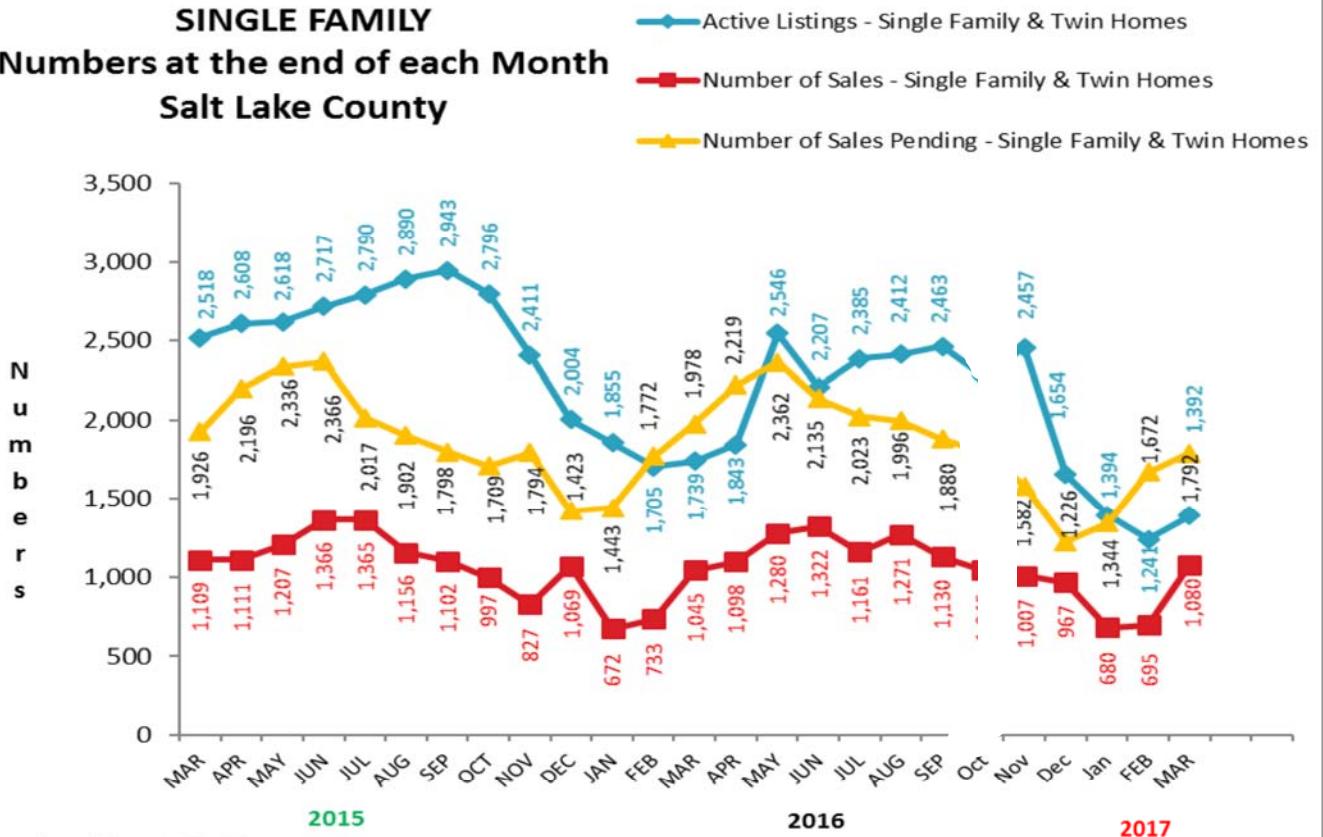


Sales per Price Range for the period 04/01/16 to 3/31/17



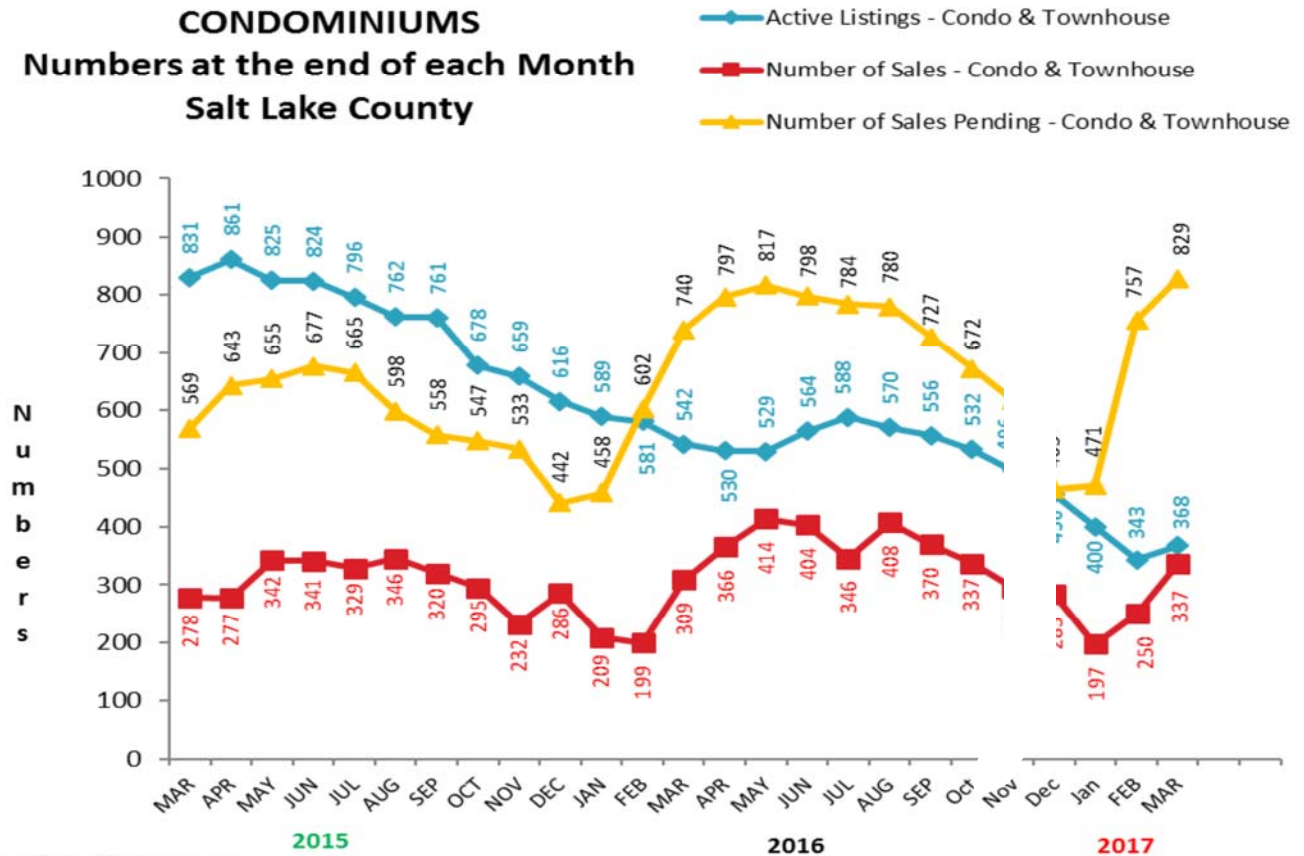
Active, Sold & Pending Monthly Inventory

SINGLE FAMILY Numbers at the end of each Month Salt Lake County



Data collected from WFRMLS

CONDOMINIUMS Numbers at the end of each Month Salt Lake County



Data collected from WFRMLS